

## Setting up a Non-SSL SMTP Server for Use with T&D Loggers

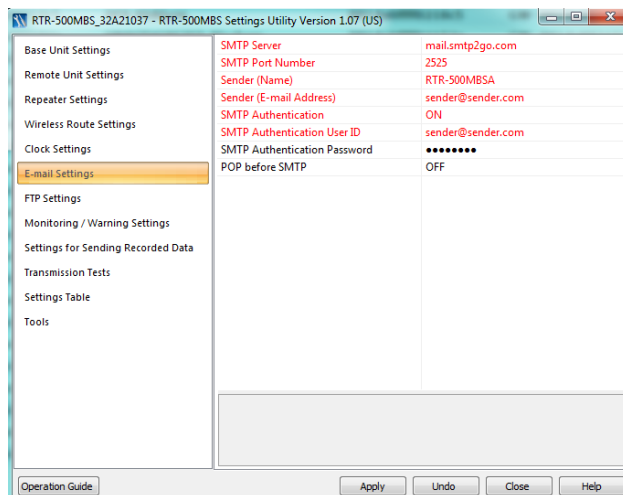
T&D's [RTR-500MBS-A Mobile Base Station](#) is a GSM-standard base unit for the T&D RTR-500 wireless data logging system. These wireless data loggers are ideal for monitoring and alarming on temperature and other parameters in trucks, warehouses and more. Like T&D's other base units for this system, it requires a [Simple Mail Transfer Protocol \(SMTP\)](#) server that does not use the standard security protocol [Secure Sockets Layer \(SSL\)](#), or a Non-SSL SMTP Server. Some cell companies advertise e-mail with their carrier services, but the RTR-500MBSA cannot use the automatic SIM settings provided by these cell services. With this in mind, this article will show you how to quickly set up auto-data transfer.



### Setting Up a Free Non-SSL SMTP Server:

After some searching, we discovered [SMTP2GO](#). This site has a free service (listed as a trial on the main page) that allows up to 1000 emails a month through their Non-SSL SMTP Server. Setup of the service is easy—simply provide an e-mail and a password. You will then receive a confirmation e-mail to that account. No payment type is necessary for the free service. After you review the confirmation e-mail, you'll be able to log in. The initial page is a dashboard that summarizes your traffic for the month and provides you with the server settings.

The screenshot below is from the RTR-500MBS-A configuration software. It displays the server settings for use with an SMTP2go.com account. The actual e-mail address will be the address you use to sign up for the SMTP2GO service.



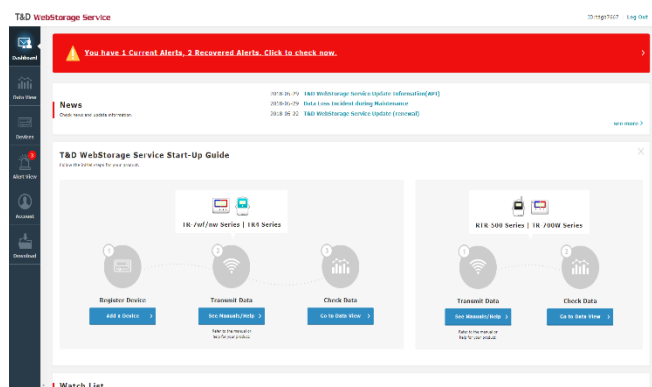
These straightforward steps will allow you to use most network-connected standalone devices that act as an SMTP client to send e-mails to anyone.

## Automated Temperature Monitoring and More:

T&D's [RTR-500MBS-A Mobile Base Station](#) is ideal for remote access to data and alerts where local internet is not available (e.g. remote geographic areas or where you do not have access to a customer's or client's LAN/Internet connection).

The RTR-500MBS-A can be used anywhere within a 3G coverage area. This enables data collection and monitoring without needing a LAN or PCs. The RTR-500MBS-A is compatible with all [T&D RTR Wireless Data Loggers](#), including the popular **RTR-505 models** which monitor temperature, current/voltage and more. The T&D solution is a very effective GSM data logger system.

By setting the free [T&D WebStorage Service](#) as the recipient of data, users can quickly store and access important data without having to prepare their own server. T&D's cloud storage service continually monitors your data, looking for any value that exceeds your pre-set upper/lower Alarm Limits. You'll receive an "Alert" notification, see RED colored icons and color-coded values in graph form, and you can also check the current conditions of each data logger, including their battery levels.



With T&D wireless data loggers, the WebStorage Service will also enable you to track your data on your mobile device, so you can view it anytime, anywhere. You can also enable multiple users to simultaneously view, share and use the data remotely.

For more info on the [3G Mobile Base Station RTR-500MBS-A](#), or for more [T&D models](#) measuring temperature, humidity, and more, contact a CAS Data Logger Applications Specialist at **(800) 956-4437** or visit our website at [www.DataLoggerInc.com](http://www.DataLoggerInc.com).