

Use This Pod to Monitor...

- Refrigerator Temperature
- Freezer Temperature
- LN2 Cryogenic Freezer Temperature

Fast and Easy Set Up

- Plug into your Local Area Network.
- Place temperature probe inside freezer.
- Login to your Accsense Online Account from ANY Web Browser.
- Access Live and Historic Data
- Set Alarm Levels and Contacts (Phone, Email, Text Message)
- View Graphs and Logs Online

A2-06 3 Input LAN Wired Temperature Pod



General Specifications

General	
Sampling Rate	User Settable 30 sec – 24hrs
Emergency Data Storage	255 Samples
Operating Environment	-20°C to 70°C, 5-95%rh Non-Condensing
Dimensions	4.94 in. x 2.75 in x 1.275 in. (125mm x 70mm x 32mm)
Weight	6.4 oz. (182g)
Power Options	100-240Vac 50-60Hz Power Over Ethernet Lithium Backup Battery (4 hour life at 1 minute sampling intervals)

Features

External RTD Temperature Probes	
Temperature Range	-100°C to +100°C
Typical Accuracy	±1°C (Excluding RTD accuracy)
Sensor Type	2 x Pt100

External Thermocouple Temperature Probe	
Temperature Range	-200°C to +400°C
Typical Accuracy	±1°C (Excluding TC accuracy)
Sensor Type	1 x Type T Thermocouple

Accessories

E1-50	ISO 17025 NIST Traceable Calibration Certificate Available
E1-19	Temperature Probes (RTD)
E1-25	Cryogenic Temperature Probe (Thermocouple Type-T)
E1-34	Thermal Buffer for use with E1-19 temperature probe

Remotely Hosted Monitoring & Alarming

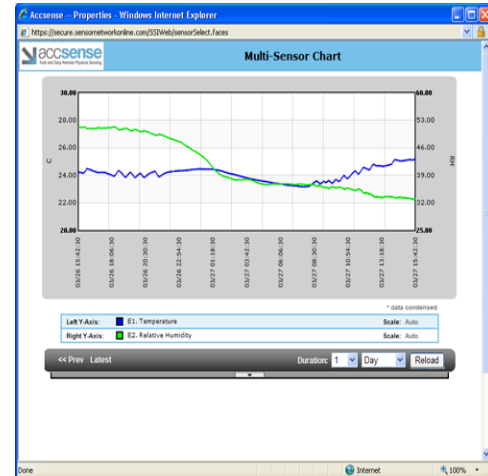
Alarming originates from a remote server system with redundant power, so if YOUR power or Internet service fails, you will receive an immediate alarm notification. Only the Accsense hosted alarming solution can offer this capability.

All of the measurements acquired using the Accsense solution are immediately available on your secure Accsense Account, online.

Updated in real-time, you can plot measurement history, analyse tabular data, and set alarms to watch your data and provide email, pager, or cell phone alerts.

Features

- ✓ Simple to use, virtually no learning curve.
- ✓ View tabular measurement data online.
- ✓ Download measurement data for offline analysis.
- ✓ Completely secure off-site backup
- ✓ Allow password-protected, limited access to certain users.
- ✓ Web based, no software installation or firewall configuration hassles.
- ✓ Customizable interface with dashboard of most recent measurements from all sensor pods.
- ✓ Instant access to charts depicting measurement history, with ranges as narrow as 5 minutes or as wide as 90 days.
- ✓ Manual vertical scaling allows for consistency across multiple graphs and samples.
- ✓ Setup alarm states and receive alarms via email, cell phone, pager, or landline.
- ✓ Define customizable alarm callout lists for each monitoring point, and for each pod.
- ✓ FREE software/feature upgrades!



Capabilities

Online Account

- Web Access From Any Browser
- Centralized Monitoring
- Centralized Account & System Mgmt & Control

Secured Data Logging

- Unalterable Measurements
- Data Automatically Recorded At User Selectable Intervals
- Data Stored In Time/Data Stamped Log
- "One-Click" Download Of Data

Secure Data Storage

- 100% Secure
- Zero Downtime
- Data Storage At Data Centre
- Data Written To Multiple Disks Simultaneously
- Daily Data Backup Stored
- Redundant Power
- Biometric Security Scanning
- Free Basic Technical Support
- (1) Full Year Rolling Data Storage

Sequential Alarming

- Sequential Phone Alarms: Call In Order, 1 Number At A Time
- Alarm Acknowledgement From Phone To Silence Further Alarm Calls
- Corrective Action Reports
- Integrated Alarm/Event Log With Corrective Action Notifications
- User Selectable Data Range For Viewing

Graphing & Statistics

- User Selectable Time Range
- Graph One Or Multiple Sensors
- View Sensor Statistics

Group Alarming

- Broadcast "All-At-Once" Alarm
- Phone Alarms
- Email Alarms
- SMS Alarms
- Pager Alarms
- Alarm/Event Log